



Government  
—— of ——  
Saskatchewan

Ministry of Environment

# Landfills & Waste Management: Regulation and Best Practices

**Waste Reduction Council  
Meeting – Weyburn  
September 25, 2014**



Government  
— of —  
Saskatchewan

# 5 Key Points:



The Need for Change



Defining a Future Vision



Landfill Operations



Examples of Success

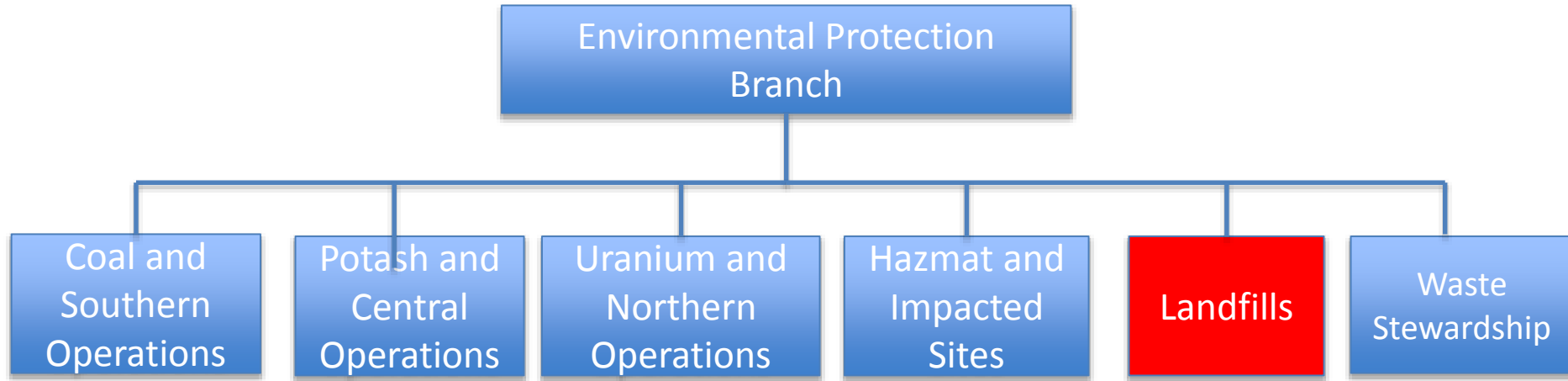


Working Together



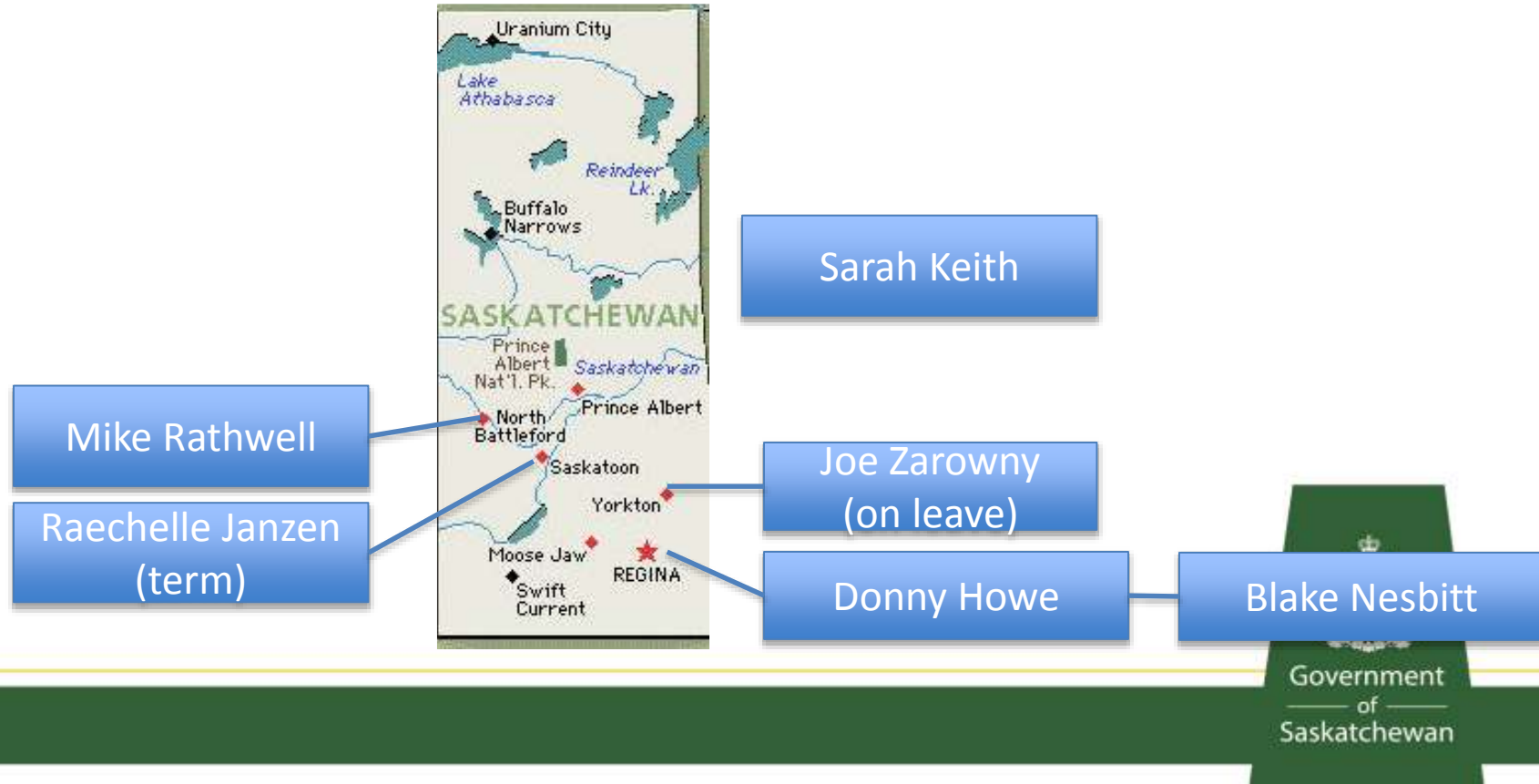
Government  
— of —  
Saskatchewan

# Who are we?



Government  
of  
Saskatchewan

# Who are we?





# The Need for Change.

Managing Waste in the Rural Environment



Government  
— of —  
Saskatchewan

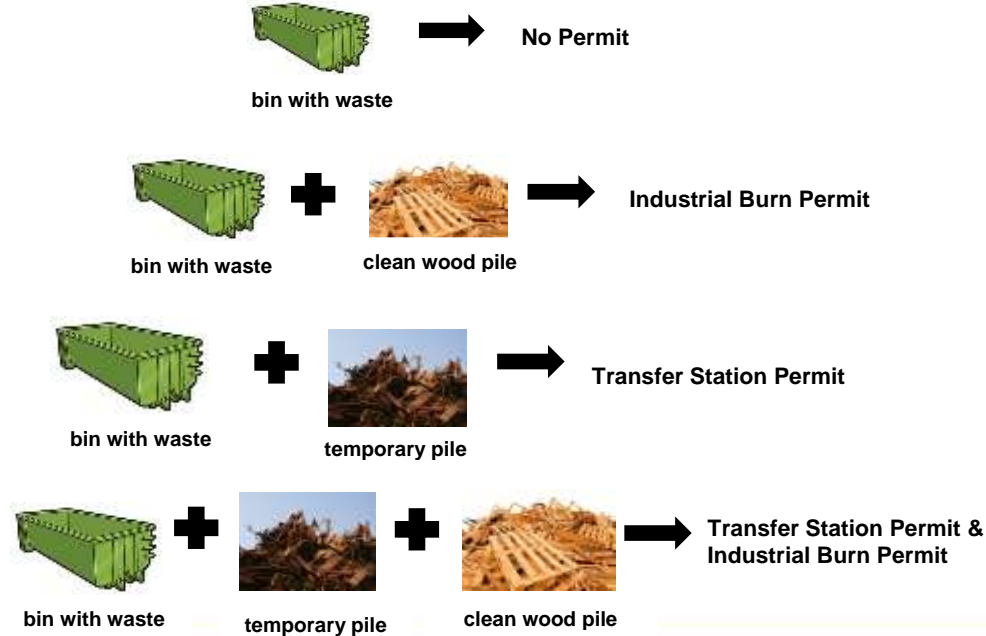
# How do we regulate

- **EMPA**
  - Industrial Effluent Works Permit (Industrial Waste Works Permit)
    - Private, Reserve, more than 20% industrial waste
- **Municipal Refuse and Management Regulations 1986**
  - MRMR permit (landfill) or approval (transfer station)
    - Municipally or government owned
    - No financial assurance

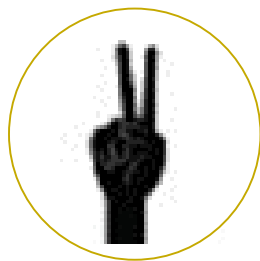


# How do we regulate?

## Transfer Station management workflow







# Defining a Future Vision.

Managing Waste in the Rural Environment



Government  
— of —  
Saskatchewan

# Direction

- **Auditors Report**
  - 9 recommendations
- **Project Charter**
  - 3 Terms of Reference
    - Formalizing Landfill Requirements
    - Waste Management Education Program
      - Internal and External
      - CFS component
    - Reporting Program Process Improvements





# Landfill Operations.

Highlights for your landfill operations now



Government  
— of —  
Saskatchewan

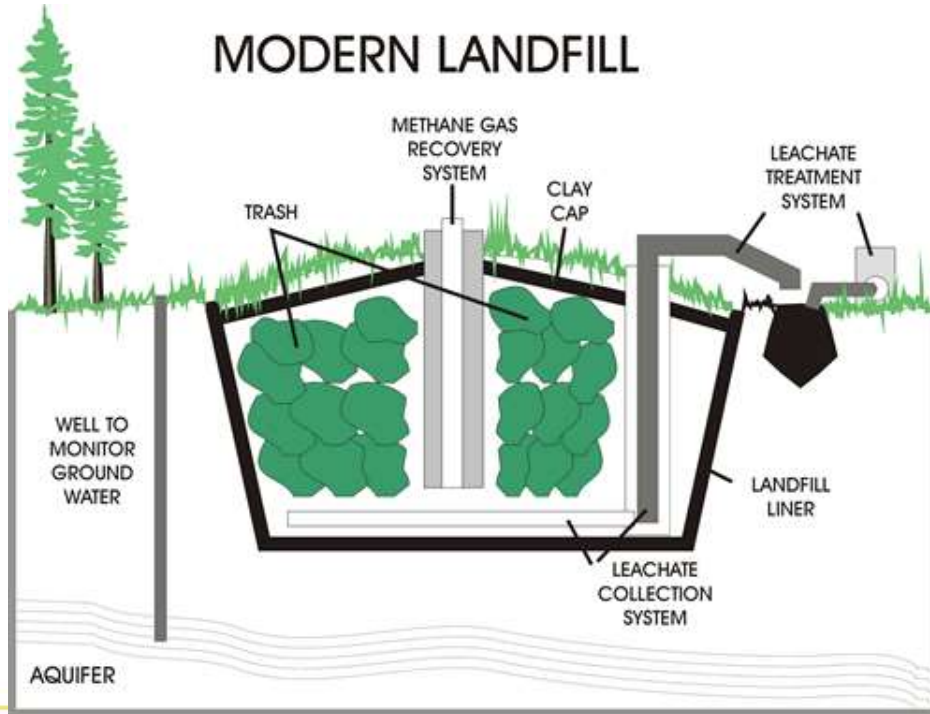
# Landfill basics

Compaction:



Government  
of  
Saskatchewan

# Landfill basics



Government  
of  
Saskatchewan

# Permit Conditions

- Follow your regulatory permit conditions.
- Supervision of site.
- Cover and Compaction on schedule and when needed.
- Contain/limit waste migration through air, overland and groundwater pathways.
- Monitor for offsite impacts



# Burning:

## Unauthorized burn reporting.





Government  
of  
Saskatchewan



# New Construction:

Need a new cell?.

- Apply to Ministry for Permit to Construct.
- Assessment and Design and Env Protection Controls needed.
- For more info discuss with a Environmental Project Officer.



Government  
of  
Saskatchewan



05/11/2007



Government  
of  
Saskatchewan

# Closure:

## Closing/Decommissioning.

- Transition to a Transfer Station
- Transition to Bins Only
- Complete closure – no use



# Diversion:

## Minimize Waste Disposed Of.

- Reduction in mixed material disposal
- Household recycling pick-up
- Make it easy for residents
- Will extend the life of your newly constructed engineered cell



Government  
— of —  
Saskatchewan



# Littering: A growing and shared challenge.



# Dump Sites:

## Not legal and not safe

---





# Examples of Success.

Managing Waste in the Rural Environment



Government  
— of —  
Saskatchewan



# Northwest Regional Waste Management Authority: *A collective approach*



# Southwest Waste Management Authority: Improved ground water protection





# Working Together.

Managing Waste in the Rural Environment



Government  
— of —  
Saskatchewan

# Report Littering and Dumpsites

- TIP Line 1-800-667-7561
- Client Service Office (general info) 1-800-567-4224
- Spill report line (landfill fires) 1-800-667-7525.



**Ministry of Environment**  
**Michael Rathwell**  
**306-446-7791**  
**michael.rathwell@gov.sk.ca**

[www.environment.gov.sk.ca](http://www.environment.gov.sk.ca)



Government  
— of —  
Saskatchewan



[www.gov.sk.ca](http://www.gov.sk.ca)